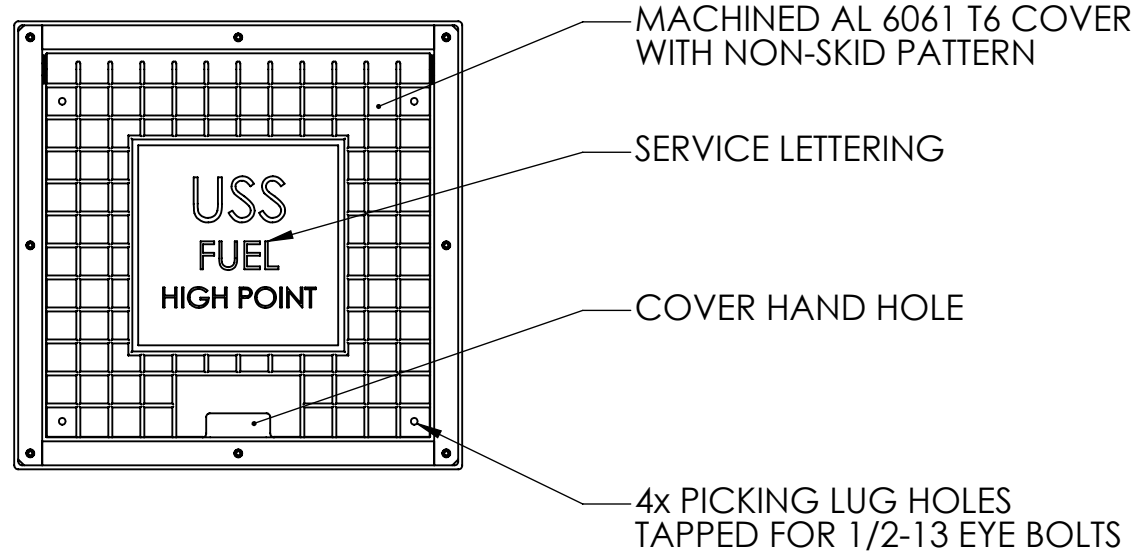
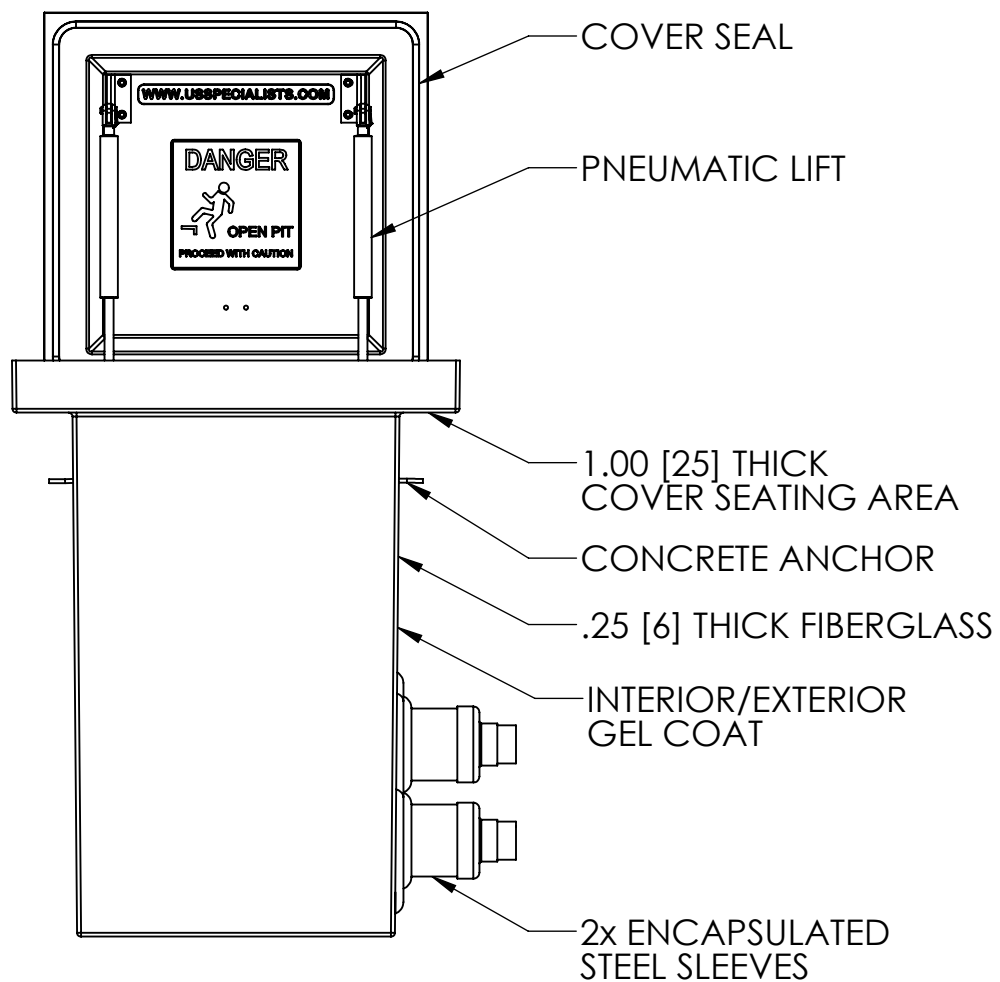


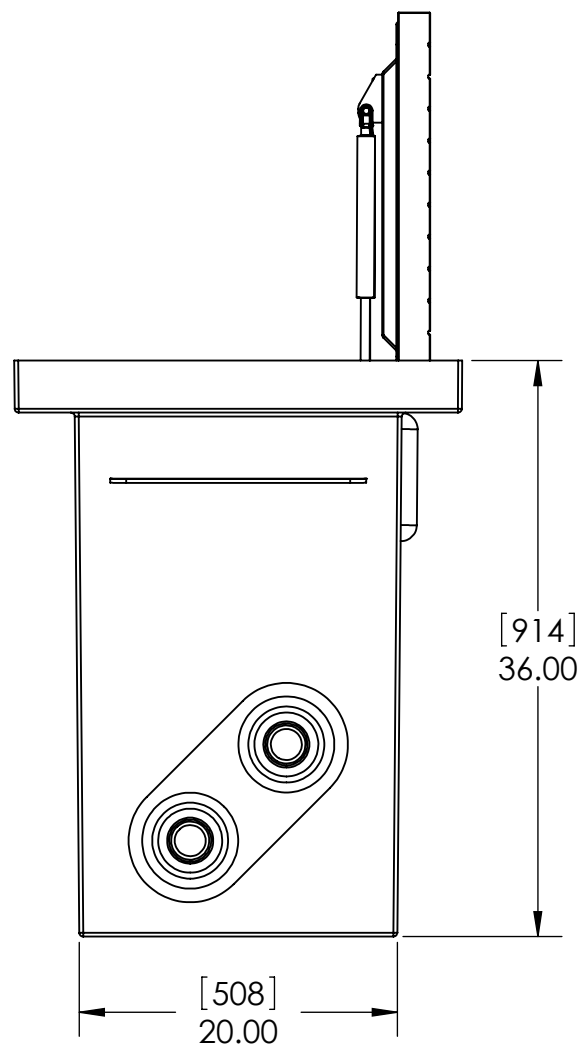
TOP VIEW



PLAN VIEW

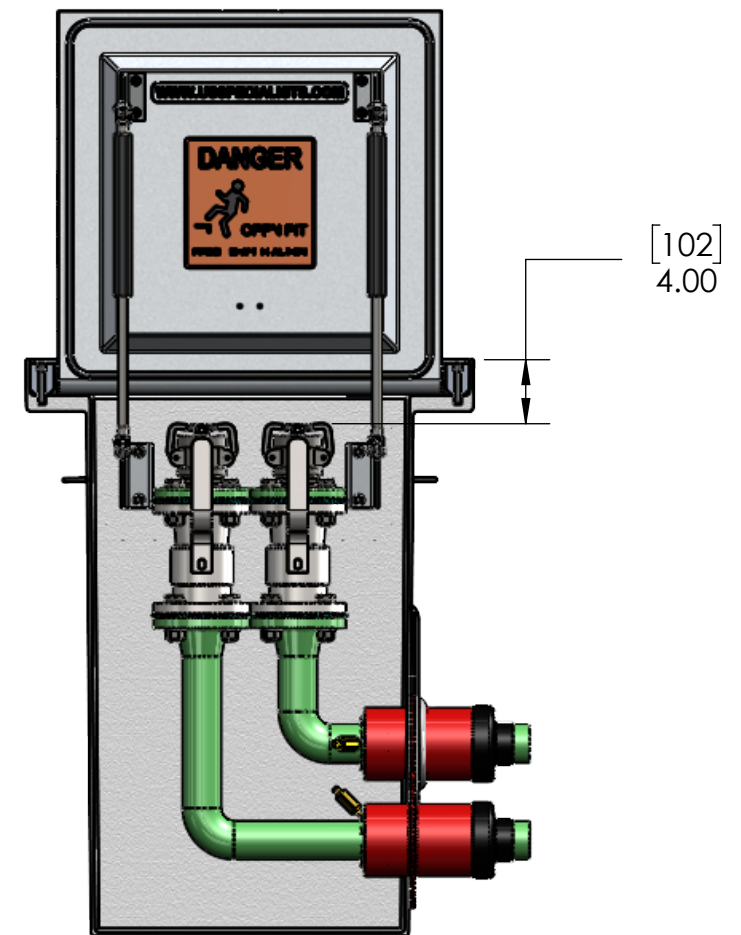
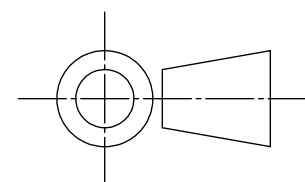


FRONT VIEW



SIDE VIEW

[MILLIMETERS]  
INCHES

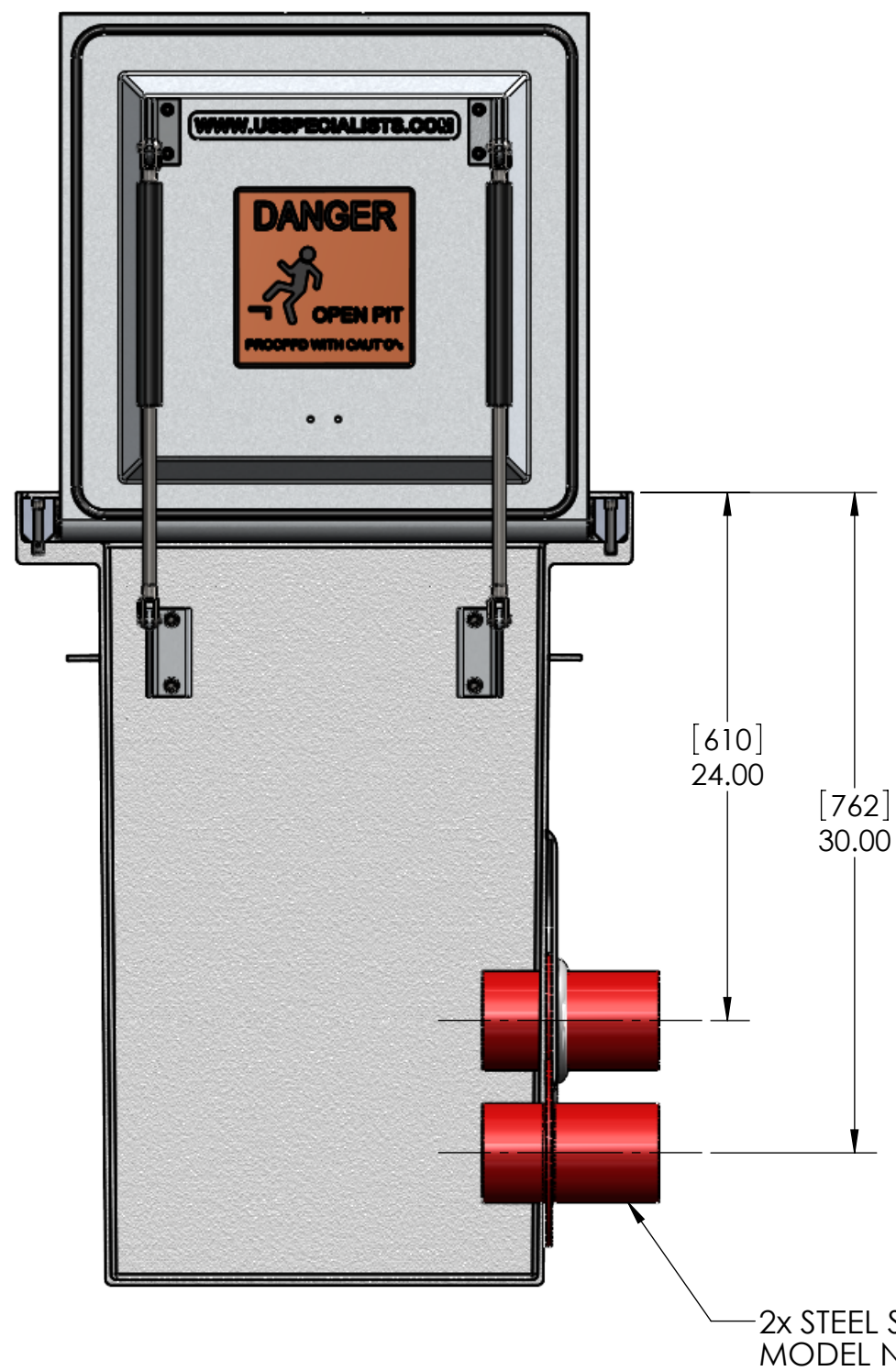


FRONT CUT VIEW

INTERNAL COMPONENTS SHOWN FOR REFERENCE.  
NO INTERNAL COMPONENTS PROVIDED



APPROVALS		DATE	<b>USS, LLC</b> PHONE: (260) 693-1172 FAX: (260) 693-1178 WEB SITE: WWW.USSPECIALISTS.COM <b>USS24-20x20-36D</b> <b>HPVSE(2x2)[2x4](2xTP)</b> <b>3 VIEW, PLAN, CUT</b> <small>THE INFORMATION ON THIS DRAWING IS PROPRIETARY AND IS NOT TO BE REVEALED TO THIRD PARTIES WITHOUT WRITTEN CONSENT OF A CORPORATE OFFICER OF USS, LLC.</small>
DRAWN	DLL	09-12-24	
CHECKED	DLL	09-12-24	
APPROVED	CDM	09-12-24	
SHEET 1 OF 3			
SCALE: 1:12		SIZE: B	



QUANTITY	_____
----------	-------

RELEASE FOR FABRICATION

NAME	SIGNATURE
DATE	COMPANY

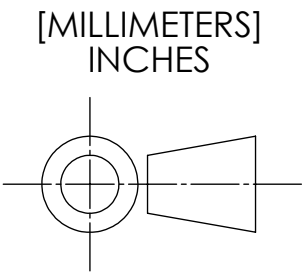
APPROVALS	DATE
DRAWN DLL	09-12-24
CHECKED DLL	09-12-24
APPROVED CDM	09-12-24
SHEET 2 OF 3	

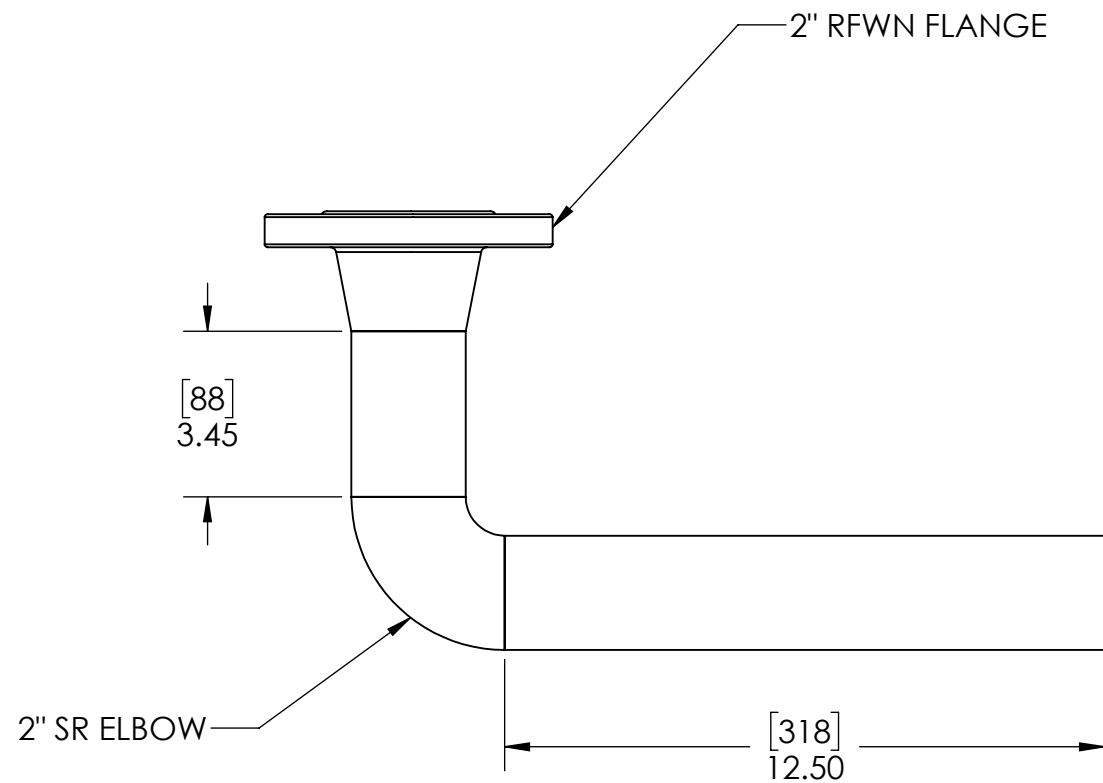
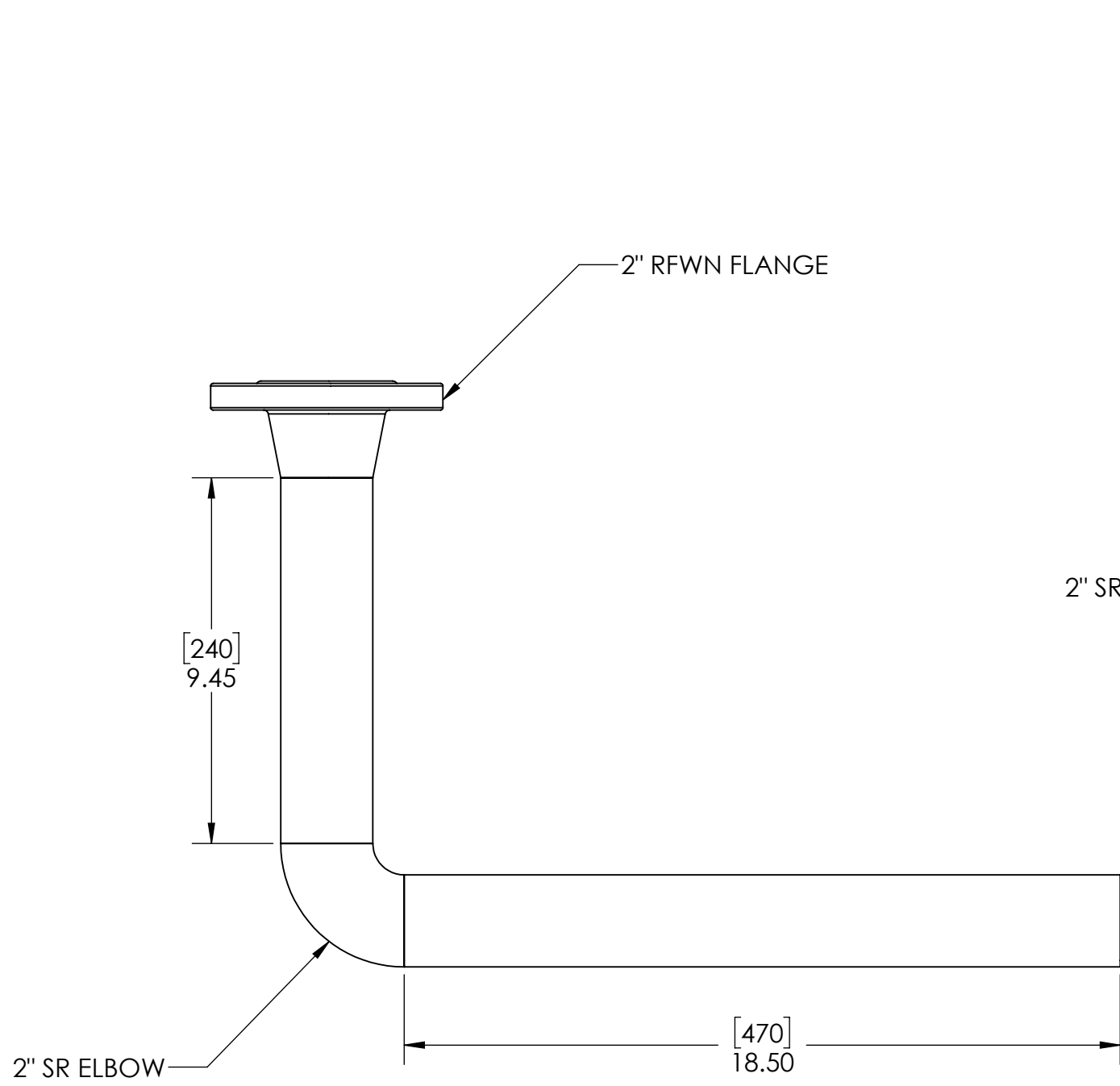
**USS, LLC**  
PHONE: (260) 693-1172 FAX: (260) 693-1178  
WEB SITE: WWW.USSPECIALISTS.COM

**USS24-20x20-36D**  
**HPVSE(2x2)[2x4](2xTP)**  
**SUBMITTAL**

THE INFORMATION ON THIS DRAWING IS PROPRIETARY AND IS NOT TO BE REVEALED TO THIRD PARTIES WITHOUT WRITTEN CONSENT OF A CORPORATE OFFICER OF USS, LLC.

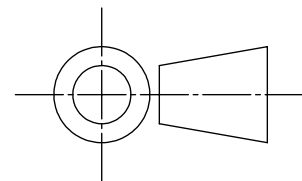
EMPTY PIT: 301 LB [137 KG]





STACK-UP COMPONENTS SHOWN TO SCALE. HOWEVER, CONTRACTOR SHOULD PROTOTYPE AND FIELD TEST FIRST ARTICLE BEFORE FABRICATING REMAINING STACK-UPS.

[MILLIMETERS]  
INCHES



APPROVALS		DATE	<b>USS, LLC</b> PHONE: (260) 693-1172 FAX: (260) 693-1178 WEB SITE: WWW.USSPECIALISTS.COM
DRAWN	DLL	09-12-24	
CHECKED	DLL	09-12-24	
APPROVED	CDM	09-12-24	
SHEET 3 OF 3			<b>USS24-20x20-36D</b>
			<b>HPVSE(2x2)[2x4](2xTP)</b>
			<b>STACK-UP</b>
SCALE: 1:12		SIZE: B	THE INFORMATION ON THIS DRAWING IS PROPRIETARY AND IS NOT TO BE REVEALED TO THIRD PARTIES WITHOUT WRITTEN CONSENT OF A CORPORATE OFFICER OF USS, LLC.